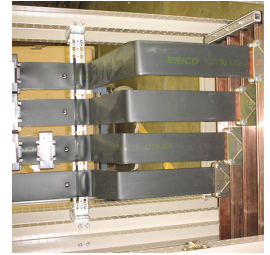
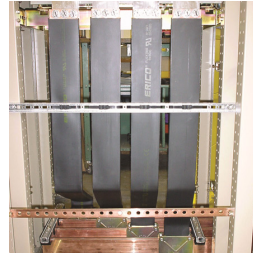
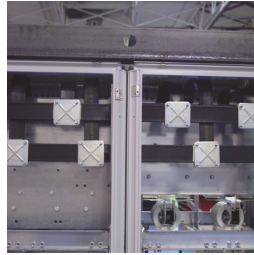
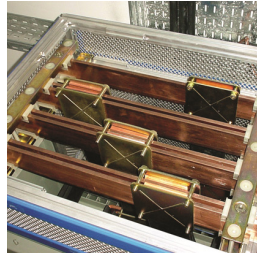
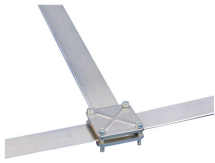
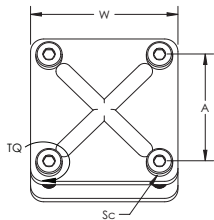


# BC Ribbed Steel Busbar Clamp



- Connects two copper busbars together or nVent ERIFLEX Flexibar to copper busbar
- Two ribbed plates complete with screws
- Allows for excellent electrical contact
- Installs quickly and easily
- Ideal for on site modifications
- RoHS compliant



Material: Steel  
 Finish: Electrogalvanized  
 Clamping Capacity: 20 mm



Part Number	Article Number	Busbar Width	Width W	A	Screw Diameter Sc	Torque TQ	Unit Weight
BC30	553200	30 mm	56 mm	42 mm	M6	7 N-m	0.310 kg
BC40	553210	40 mm	66 mm	52 mm	M6	7 N-m	0.370 kg
BC50	553220	50 mm	83 mm	64 mm	M8	20 N-m	0.590 kg
BC63	553230	63 mm	93 mm	74 mm	M8	20 N-m	0.740 kg
BC80	553250	80 mm	118 mm	96 mm	M10	40 N-m	0.118 kg
BC100	553260	100 mm	144 mm	118 mm	M10	40 N-m	1.720 kg

Clamping capacity is calculated using included screws. Maximum clamping capacity is 50 mm (1.97") using longer 8.8 class screws.

UL, UR, cUL, cUR, cULus and cURus are registered certification marks of UL LLC.

#### WARNING

nVent products shall be installed and used only as indicated in nVent's product instruction sheets and training materials. Instruction sheets are available at [www.erico.com](http://www.erico.com) and from your nVent customer service representative. Improper installation, misuse, misapplication or other failure to completely follow nVent's instructions and warnings may cause product malfunction, property damage, serious bodily injury and death and/or void your warranty.

© 2019 nVent All rights reserved

nVent, nVent CADDY, nVent ERICO, nVent ERIFLEX and nVent LENTON are owned by nVent or its global affiliates.

All other trademarks are the property of their respective owners. nVent reserves the right to change specifications without prior notice.