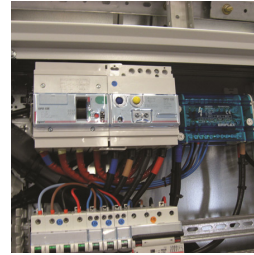
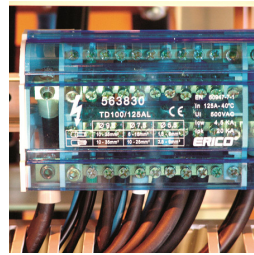
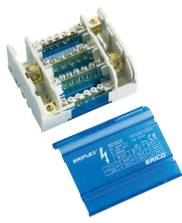
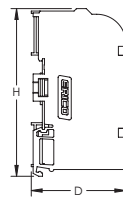
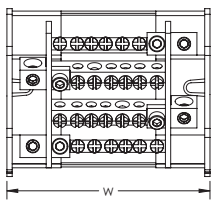


TD Compact Four Pole Distribution Block, 100/125 A



- Minimum space for maximum power
- Protection cover and insulating screens are transparent
- Insulating screen between each row
- Easy and safe connections
- Easily clips onto DIN rail or mounts to panel with screws
- Solid bars provide reliability
- Input separated from outputs
- Strong mechanical assembly
- Neutral bar available
- Halogen free
- RoHS compliant



Material: Thermoplastic, Brass

| Part Number | TD-100-125A | TD-100-125AL | TD-100-125ALL |
|--|--|--|--|
| Article Number | 563820 | 563830 | 563840 |
| Max Current Rating, IEC | 125 A | | |
| Short Term Withstand Current (I _{cw}) 1s | 4,5 kA | | |
| Peak Short Circuit Current (I _{pk}) | 30 kA | | 21 kA |
| Max Working Voltage, IEC (U _i) | 690 V | | |
| Line Side Number of Connections | 1 | | |
| Line Side Compact Stranded Wire Size | 10 - 35 mm ² | | |
| Line Side Stranded Wire Size - Ferrule | 10 - 35 mm ² | | |
| Load Side Number of Connections | 6 | 10 | 14 |
| Load Side Compact Stranded Wire Size | (5) 2,5 - 6 mm ² (1) 10 - 25 mm ² | (7) 2,5 - 6 mm ² (3) 10 - 25 mm ² | (11) 2,5 - 6 mm ² (1) 10 - 25 mm ² (2) 10 - 35 mm ² |
| Load Side Stranded Wire Size - Ferrule | (5) 1,5 - 6 mm ² (1) 6 - 16 mm ² | (7) 1,5 - 6 mm ² (3) 6 - 16 mm ² | (11) 1,5 - 6 mm ² (1) 6 - 16 mm ² (2) 10 - 25 mm ² |
| Depth (D) | 50 mm | | |
| Height (H) | 90 mm | | |
| Width (W) | 109 mm | 147 mm | 182 mm |

| | | | |
|---------------------|----------------|--------------|---------------|
| Part Number | TD-100-125A | TD-100-125AL | TD-100-125ALL |
| Unit Weight | 0.33 kg | 0.44 kg | 0.55 kg |
| Flammability Rating | UL® 94V-0 | | |
| Complies With | IEC® 60947-7-1 | | |

| Design Guideline for Distribution Blocks, Power Blocks and Power Terminals | | | | | | | | | | |
|---|-----|-----|-----|------|------|------|------|------|------|------|
| Derating according to Ambient* Temperature [°C] to maintain working temperature of 85°C | | | | | | | | | | |
| Ambient Temperature [°C] | 30° | 35° | 40° | 45° | 50° | 55° | 60° | 65° | 70° | 75° |
| Derating Coefficient (d) | 1 | 1 | 1 | 0.94 | 0.88 | 0.82 | 0.75 | 0.67 | 0.58 | 0.47 |
| *environment around the terminal blocks inside the enclosure | | | | | | | | | | |

Line side and load side number of connections are per pole.

IEC is a registered trademark of the International Electrotechnical Commission. UL, UR, cUL, cUR, cULus and cURus are registered certification marks of UL LLC.

WARNING

nVent products shall be installed and used only as indicated in nVent's product instruction sheets and training materials. Instruction sheets are available at www.erico.com and from your nVent customer service representative. Improper installation, misuse, misapplication or other failure to completely follow nVent's instructions and warnings may cause product malfunction, property damage, serious bodily injury and death and/or void your warranty.

© 2019 nVent All rights reserved

nVent, nVent CADDY, nVent ERICO, nVent ERIFLEX and nVent LENTON are owned by nVent or its global affiliates.

All other trademarks are the property of their respective owners. nVent reserves the right to change specifications without prior notice.